

CORIAN® LAVATORIES AND THE AMERICANS WITH DISABILITIES ACT (ADA)

A 2001 study of our product line has shown that, in a typical installation, all Corian® lavatories and ITBs are in compliance with the Americans with Disabilities Act (ADA).

The standard installation condition is an S-mount Corian® lavatory, seamed to a 1/2"-thick, 22"-long Corian® sheet, so that the lavatory drain centerline is 8.25" from the wall, and the sheet top is 34" from the floor.

Following are the applicable section from the ADA and the section from ANSI A117.1 granting an overflow exemption. It is important to use the language "ADA compliant per ANSI Standard A117.1" in any communication, as most lavatories will not comply without this exception.

Please be aware that it is the responsibility of the installer to ensure waste drain piping is installed within the clearance dictated by the ADA, and that the skirt does not drop more than 5" from the sheet top (29" from the floor). A general sketch is attached.

For more detailed information, refer to the ADA Lav Installation and ADA Leg Clearance template in the Technical Drawings section of this Guide.

Issued 09/27/2001

Excerpt from the Americans with Disabilities Act (ADA)

4.19.2 Height and Clearances. Lavatories shall be mounted with the rim or counter surface no higher than 34 in (865 mm) above the finish floor. Provide a clearance of at least 29 in (735 mm) above the finish floor to the bottom of the apron. Knee and toe clearance shall comply with Figure 31.

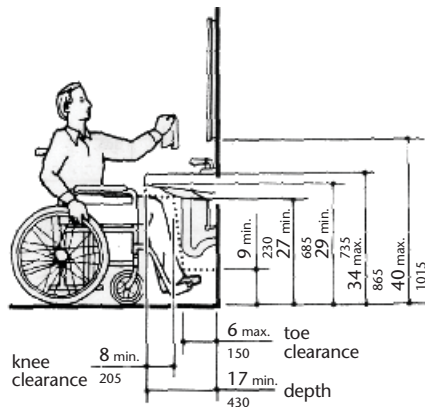


Figure 31 — Lavatory Clearances

In addition to clearances discussed in the text, the following knee clearance is required underneath the lavatory: 27 inches (685 mm) minimum from the floor to the underside of the lavatory which extends 8 inches (205 mm) minimum measured from the front edge underneath the lavatory back towards the wall; if a minimum 9 inches (230 mm) of toe clearance is provided, a maximum of 6 inches (150 mm) of the 48 inches (1220 mm) of clear floor space required at the fixture may extend into the toe space. (4.19.2, 4.19.6)

"The illustrations and text of ANSI A117.1 are reproduced with permission from the American National Standards Institute. Copies of the standard may be purchased from the American National Standards Institute at 1430 Broadway, New York, New York 10018."

Note (not quoted from ADA): ANSI A117.1, Section 606.2, Lavatories and Sinks, Exception 2, states: "The dip of the overflow shall not be considered in determining knee and toe clearances."

C950-K03158-26 1/04